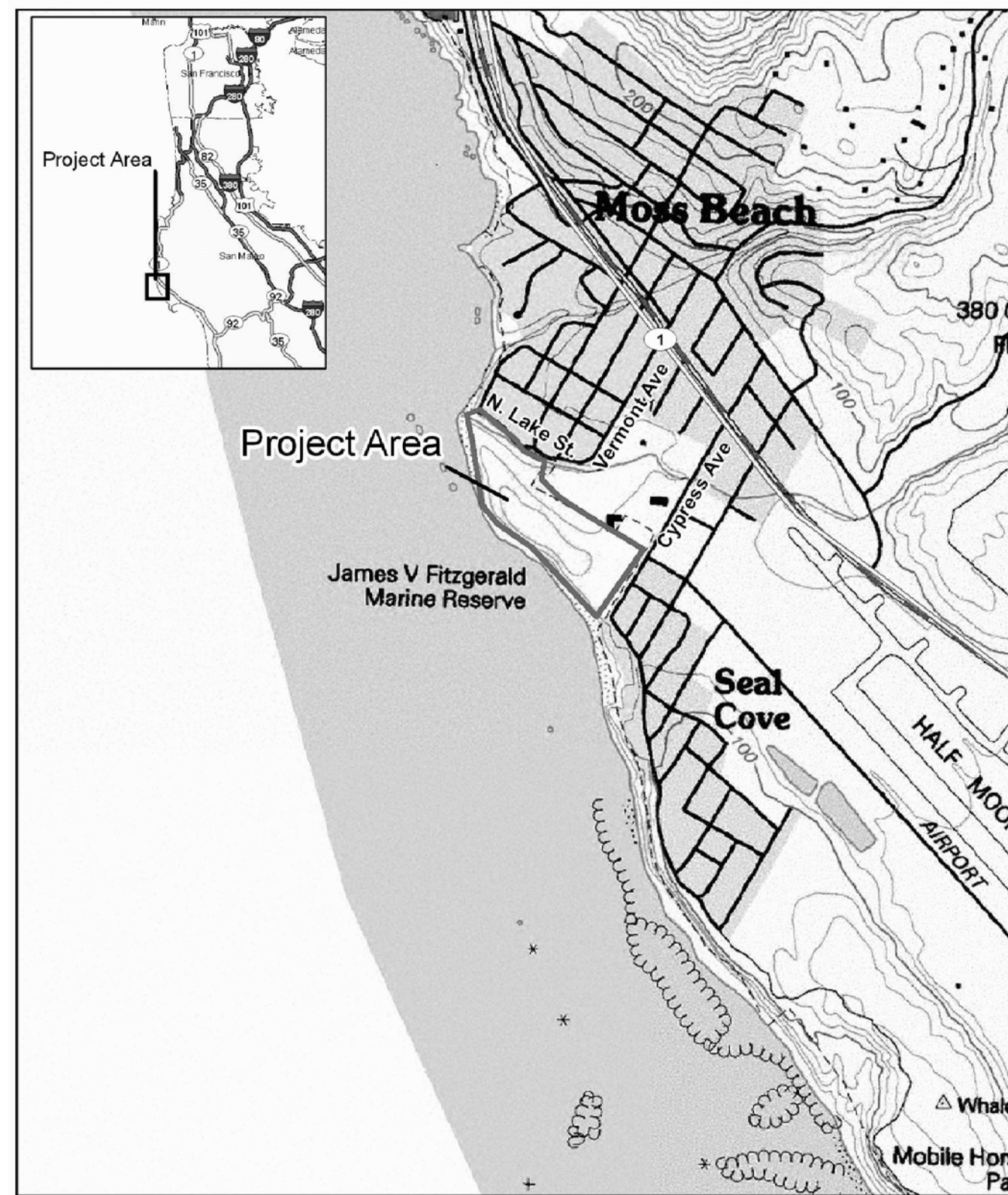


# FITZGERALD MARINE RESERVE COASTAL TRAIL

MOSS BEACH, CALIFORNIA

FITZGERALD  
MARINE RESERVE  
COASTAL TRAIL  
MOSS BEACH, CALIFORNIA

## LOCATION MAP



## SITE MAP



SCALE: 1:100

01/15/10 60% DRAFT CONSTRUCTION SET  
Date Issues And Revisions No.

PROJECT # 18054  
DRAWN BY: MCB  
CHECKED BY: GJS  
ORIGINAL DRAWING SIZE: 24 X 36

SCALE: AS INDICATED

## SHEET INDEX

- 1 --- SHEET INDEX
- 2 --- EXISTING CONDITIONS & DEMOLITION PLAN
- 3 --- SITE PLAN
- 4 --- SITE DETAILS
- 5 --- STRUCTURAL DETAILS

## SHEET INDEX

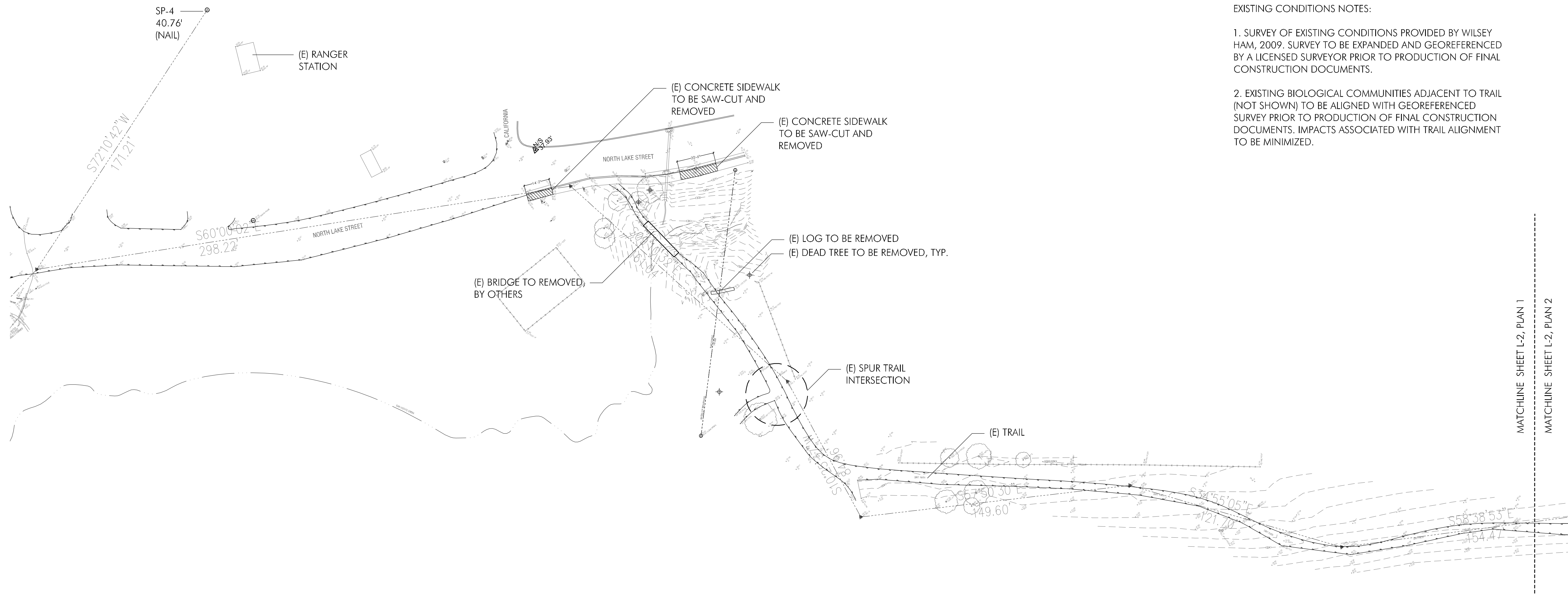
Sheet

**L-1**

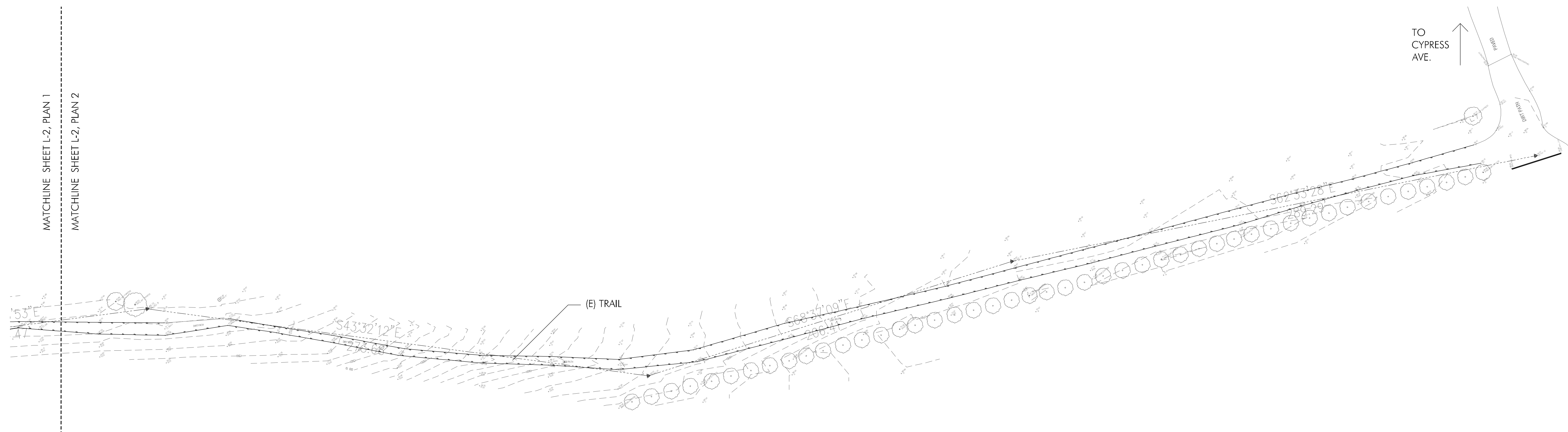
**FITZGERALD  
MARINE RESERVE**  
COASTAL TRAIL  
MOSS BEACH, CALIFORNIA

EXISTING CONDITIONS NOTES:

1. SURVEY OF EXISTING CONDITIONS PROVIDED BY WILSEY HAM, 2009. SURVEY TO BE EXPANDED AND GEOREFERENCED BY A LICENSED SURVEYOR PRIOR TO PRODUCTION OF FINAL CONSTRUCTION DOCUMENTS.
2. EXISTING BIOLOGICAL COMMUNITIES ADJACENT TO TRAIL (NOT SHOWN) TO BE ALIGNED WITH GEOREFERENCED SURVEY PRIOR TO PRODUCTION OF FINAL CONSTRUCTION DOCUMENTS. IMPACTS ASSOCIATED WITH TRAIL ALIGNMENT TO BE MINIMIZED.



**1** EXISTING CONDITIONS & DEMOLITION PLAN  
SCALE 1" = 30'



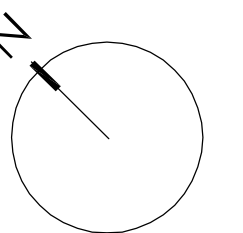
**2** EXISTING CONDITIONS & DEMOLITION PLAN  
SCALE 1" = 30'

01/15/10 60% DRAFT CONSTRUCTION SET

Date	Issues And Revisions	No.

PROJECT #18054  
DRAWN BY: MCB  
CHECKED BY: GJS  
ORIGINAL DRAWING SIZE: 24 X 36

SCALE: AS INDICATED



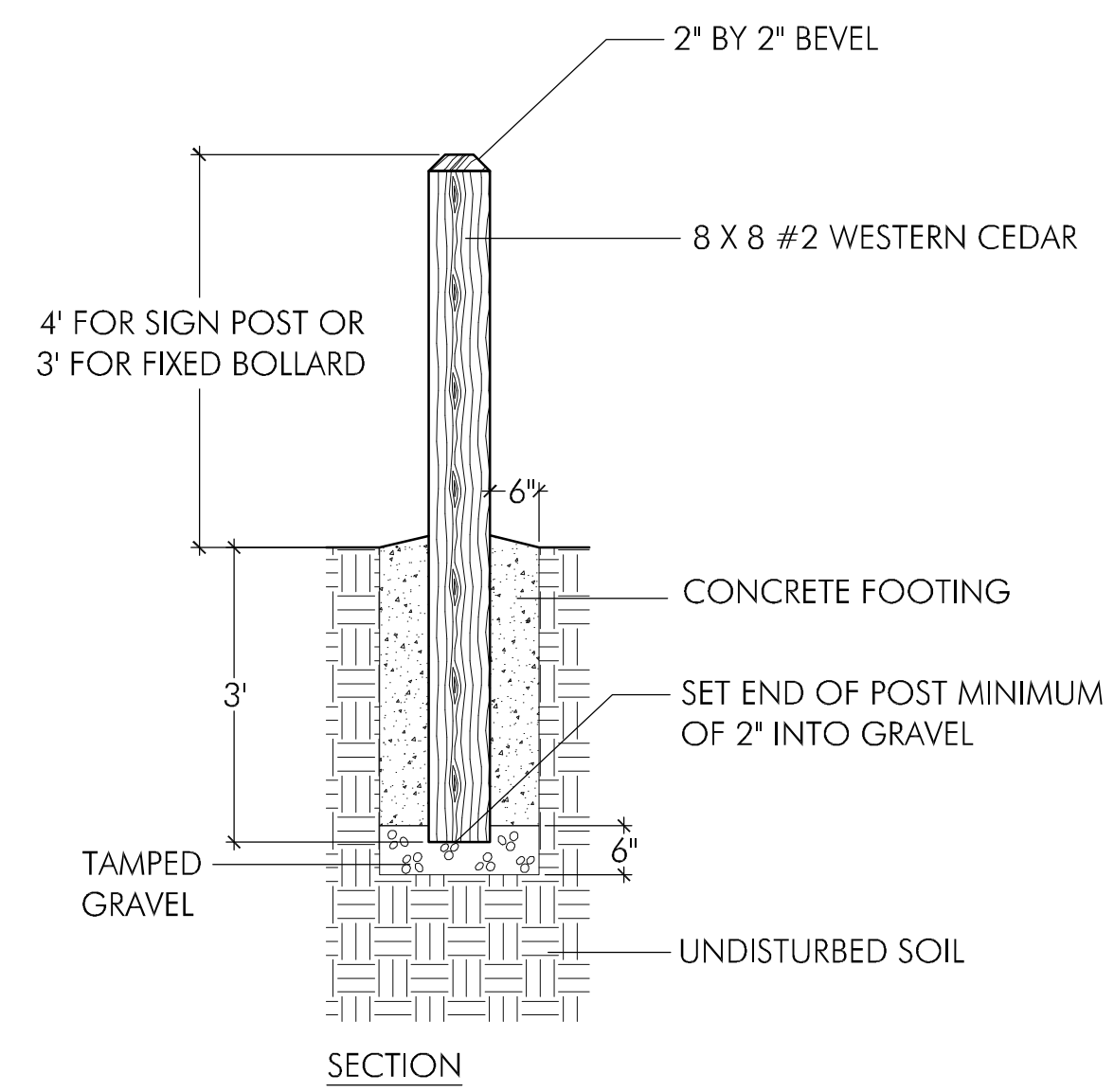
**EXISTING  
CONDITIONS &  
DEMOLITION PLAN**

Sheet

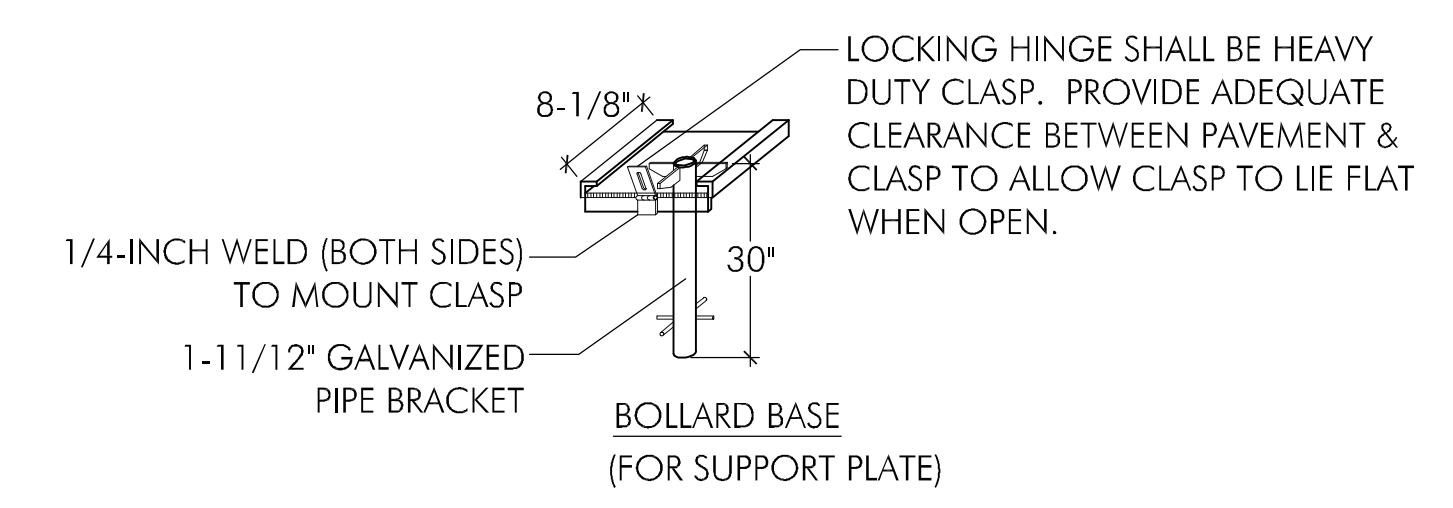
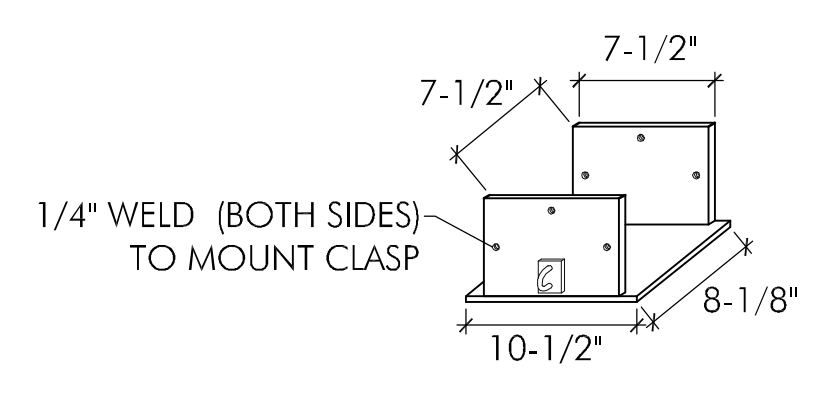
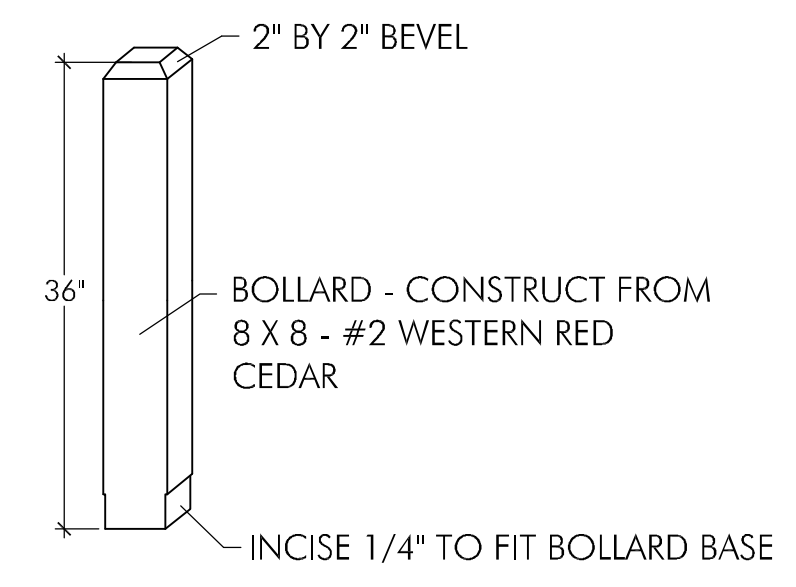
**L-2**



**FITZGERALD  
MARINE RESERVE**  
COASTAL TRAIL  
MOSS BEACH, CALIFORNIA



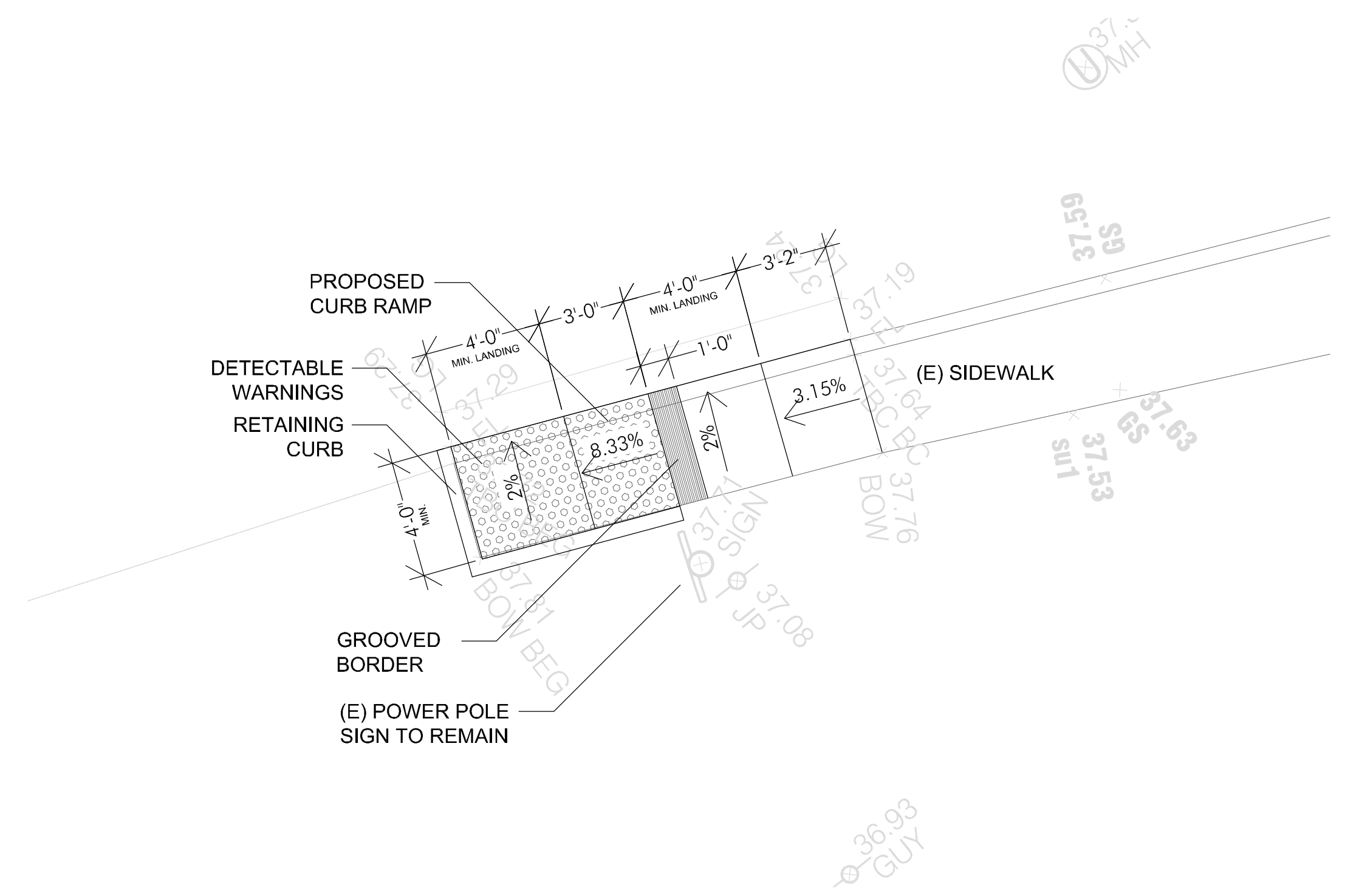
NOTE: SIGN PROVIDED AND INSTALLED BY COUNTY.



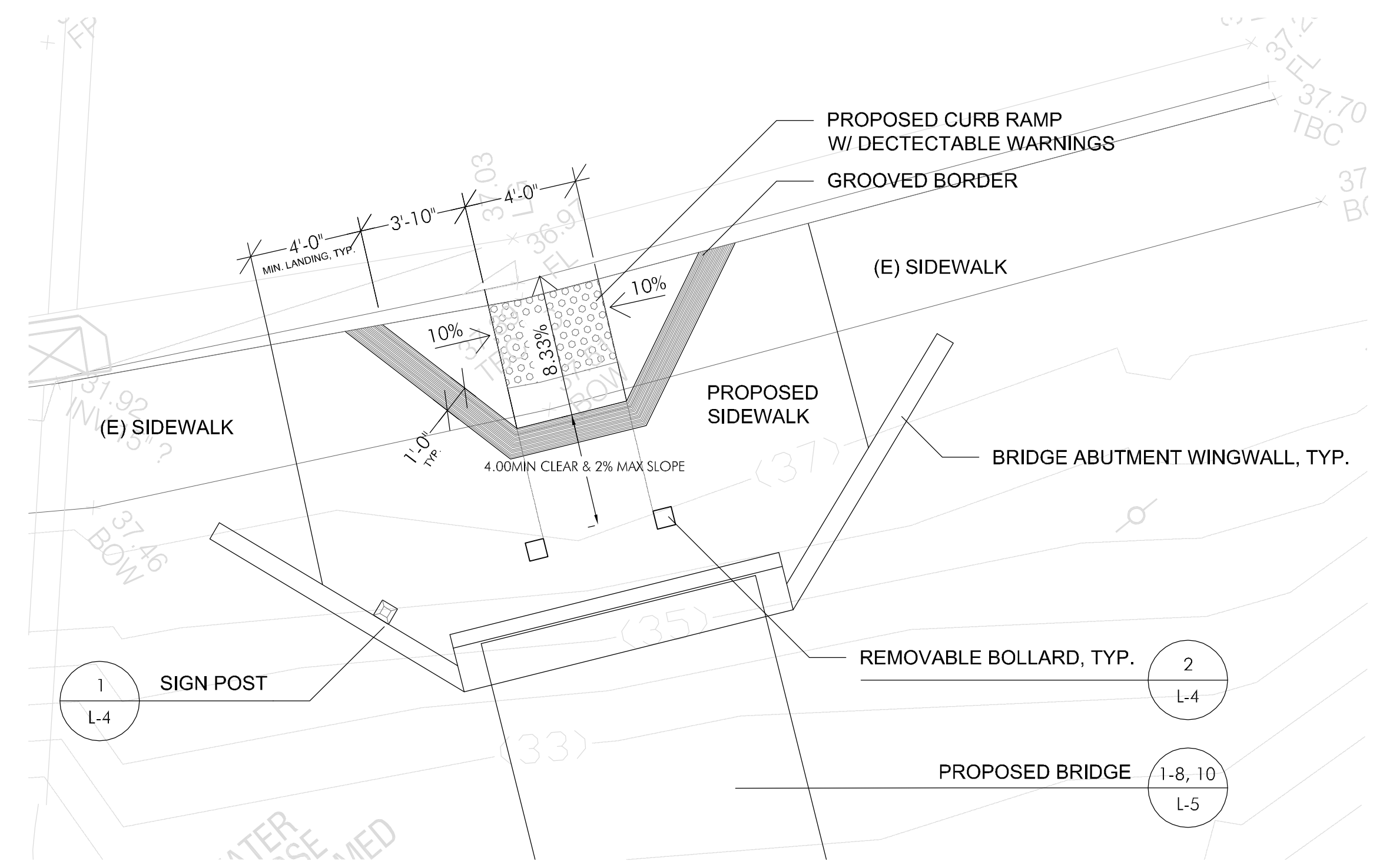
- NOTES:
- ALL PLATE MATERIALS SHALL BE 3/8" GALVANIZED STEEL.
  - BASE INSTALLATION: SET PIPE BASES IN A 12-INCH DIAMETER HOLE, 32-INCHES DEEP AND BACKFILL WITH CONCRETE. LOCK CLASP FACES THE STREET.
  - FOR SLIDE THROUGH POST BRACKET, USE THREE 7/16-INCH HOLES FOR 7/16-INCH X 1 1/2 INCH STAINLESS STEEL MACHINE SCREWS AS SHOWN.

**1** SIGN POST / FIXED BOLLARD  
NOT TO SCALE

**2** REMOVABLE BOLLARD  
NOT TO SCALE



**3** DEPRESSED CURB-CUT RAMP  
SCALE: 1/4" = 1'-0"

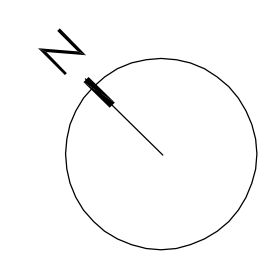


**4** FLARED CURB-CUT RAMP  
SCALE: 1/4" = 1'-0"

Date	Issues And Revisions	No.
01/15/10	60% DRAFT CONSTRUCTION SET	

PROJECT #18054  
DRAWN BY: MCB  
CHECKED BY: GJS  
ORIGINAL DRAWING SIZE: 24 X 36

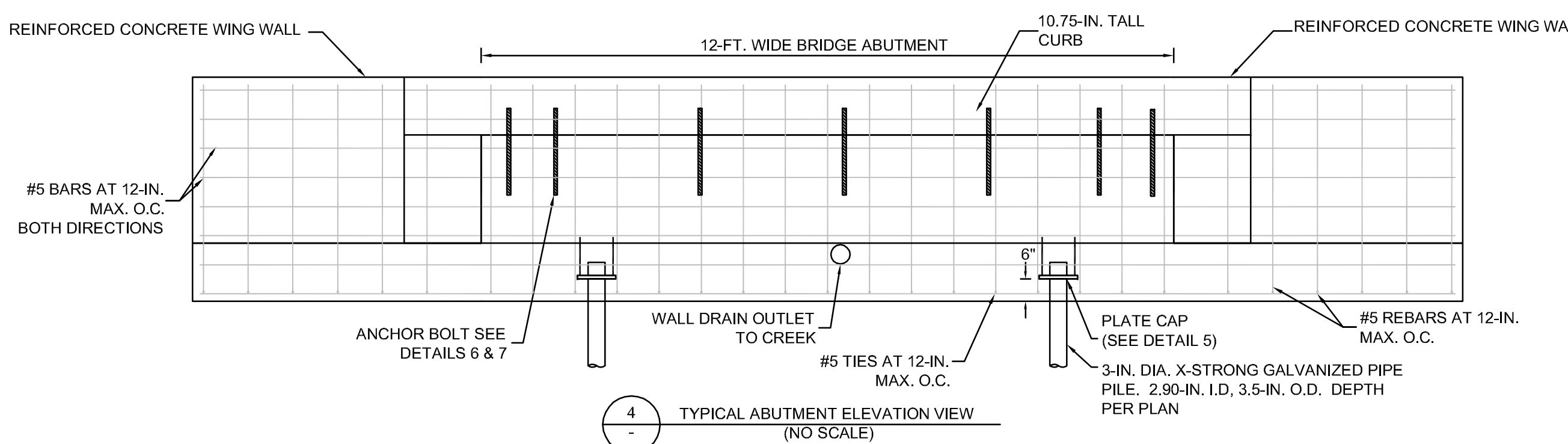
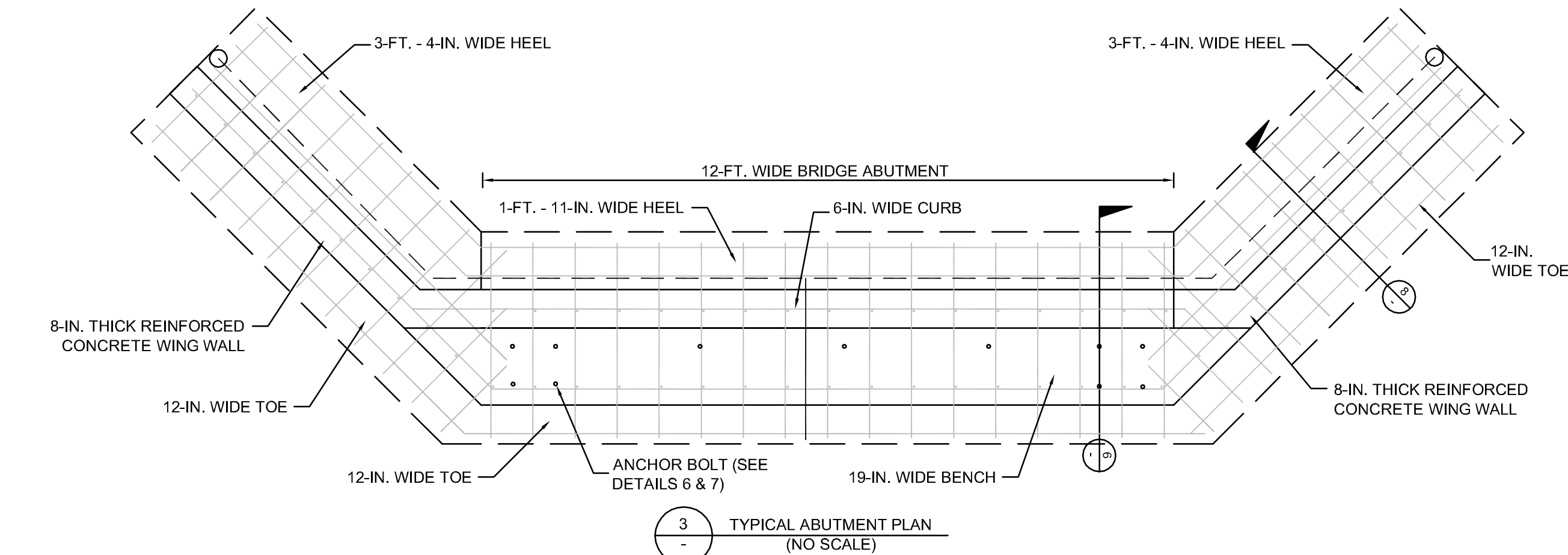
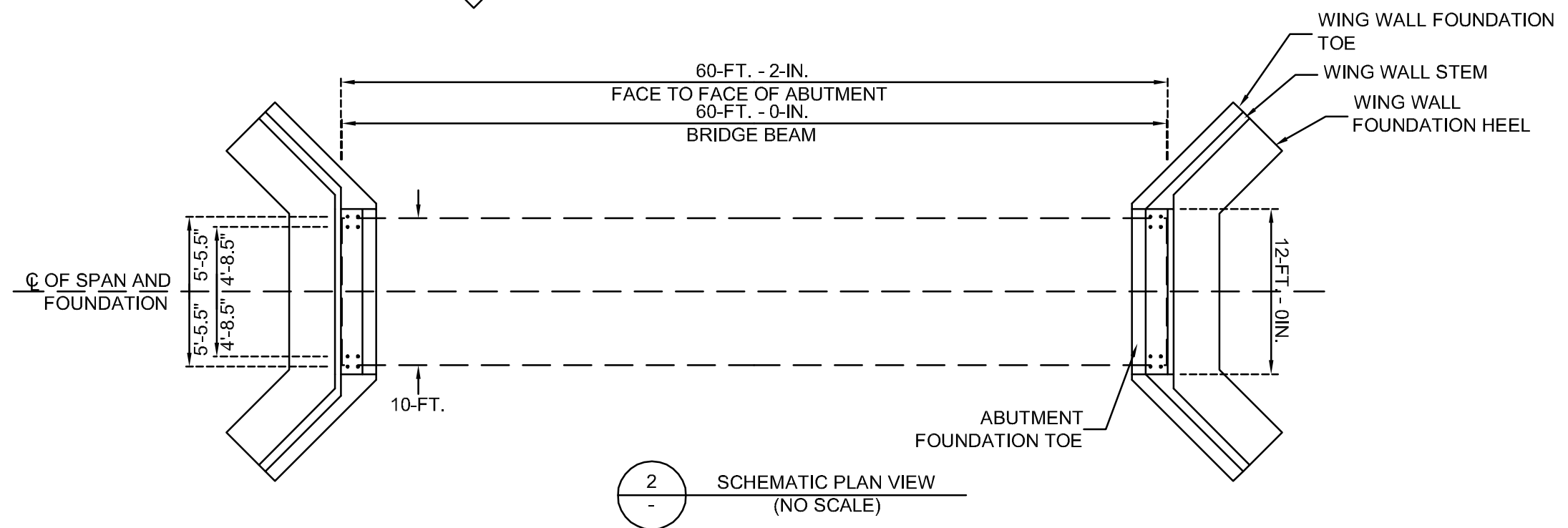
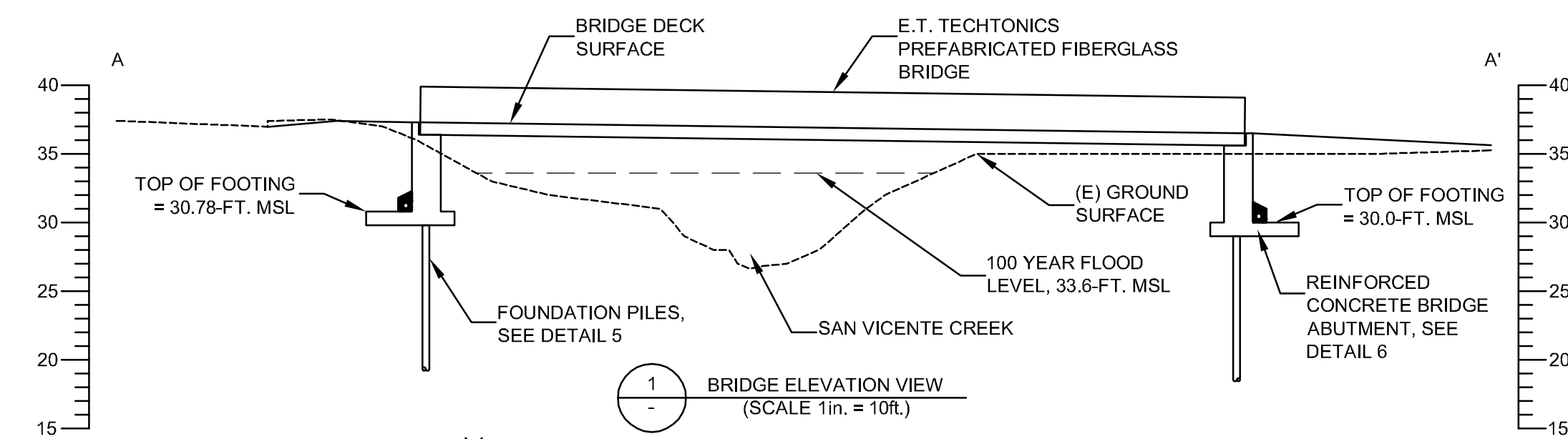
SCALE: AS INDICATED



**SITE DETAILS**

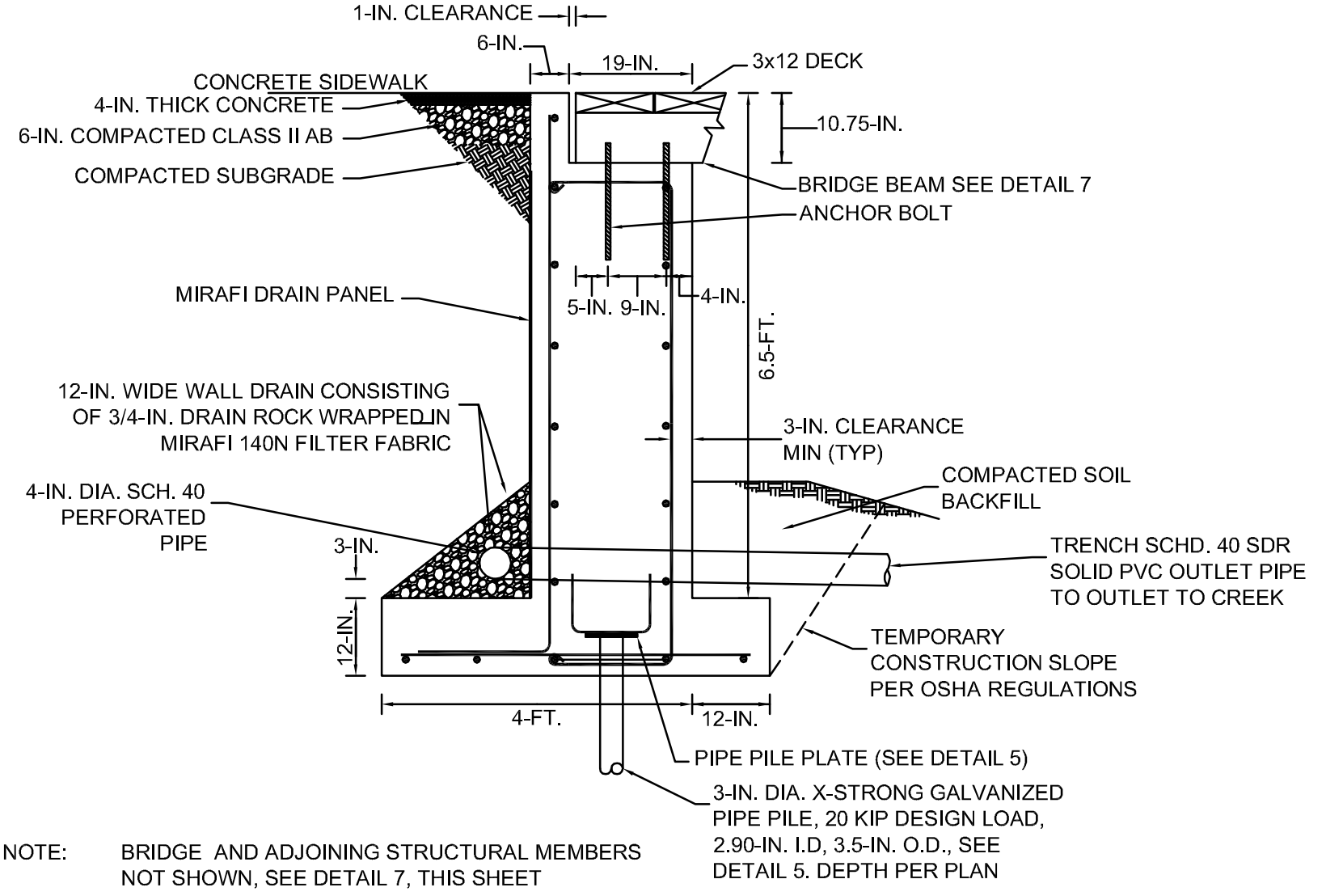
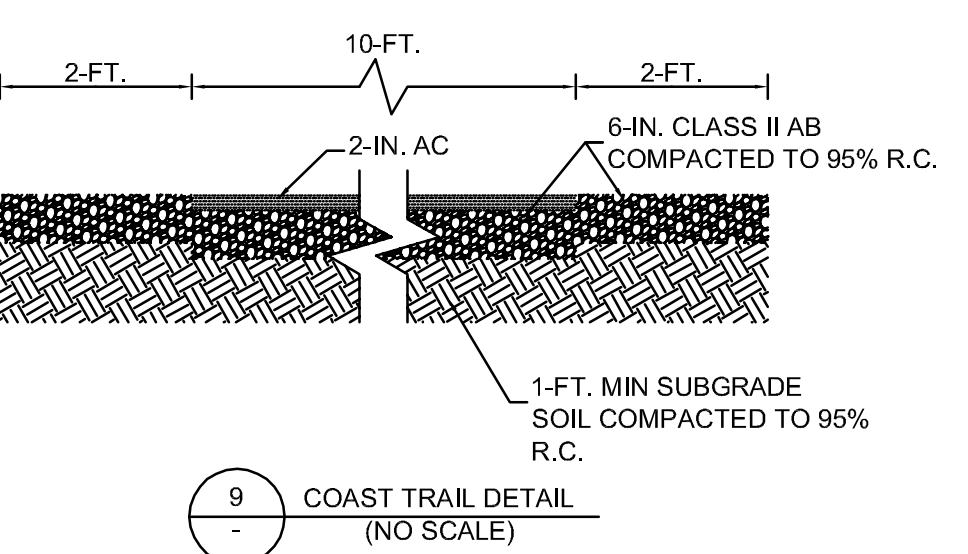
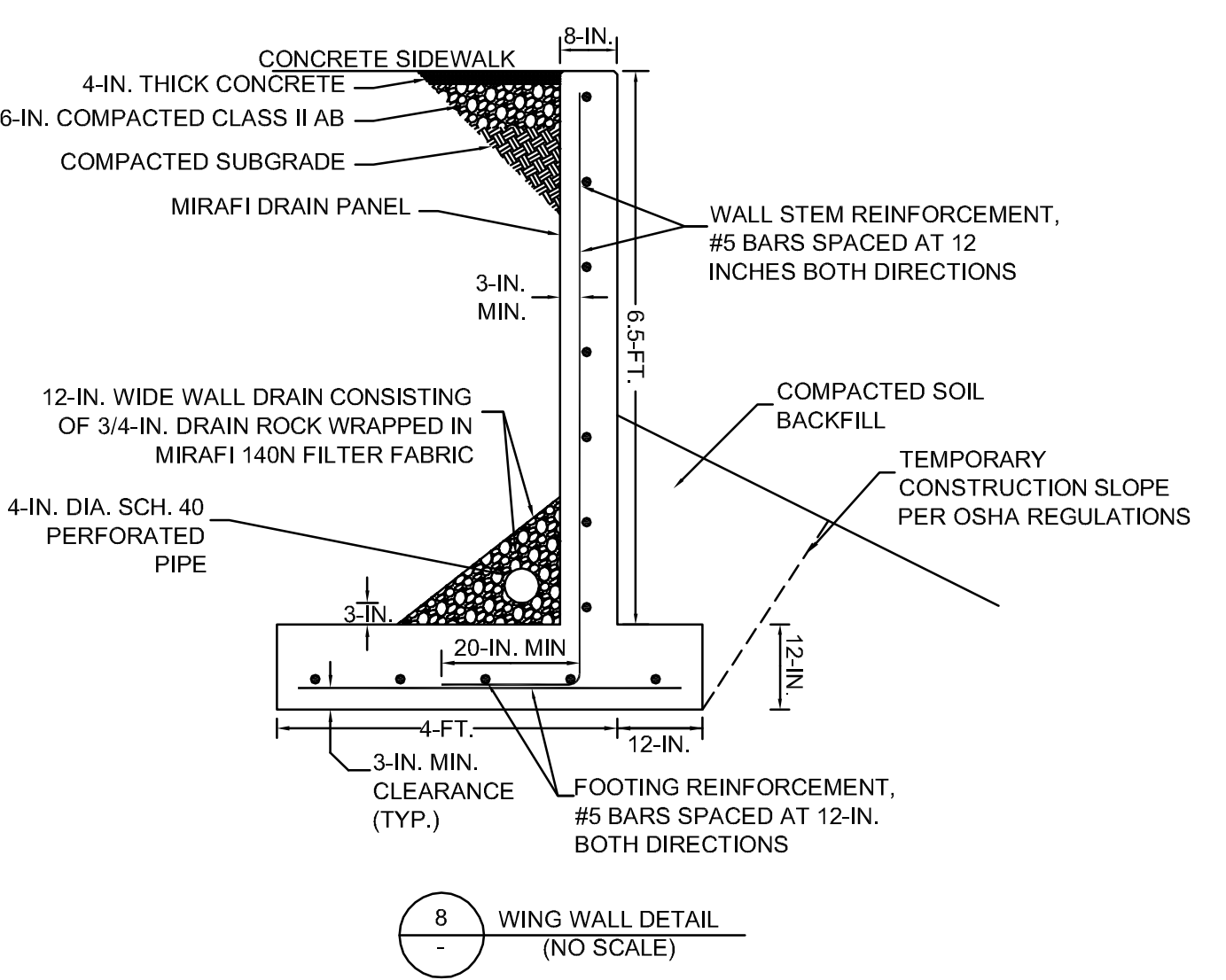
Sheet

**L-4**

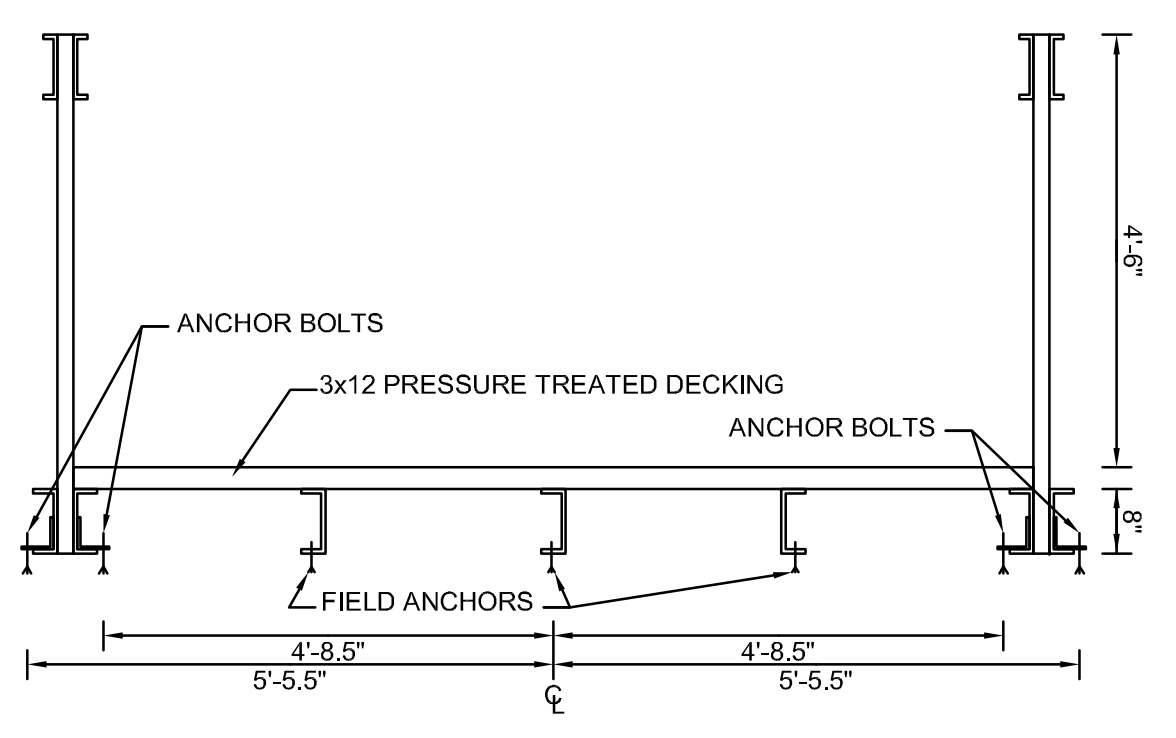
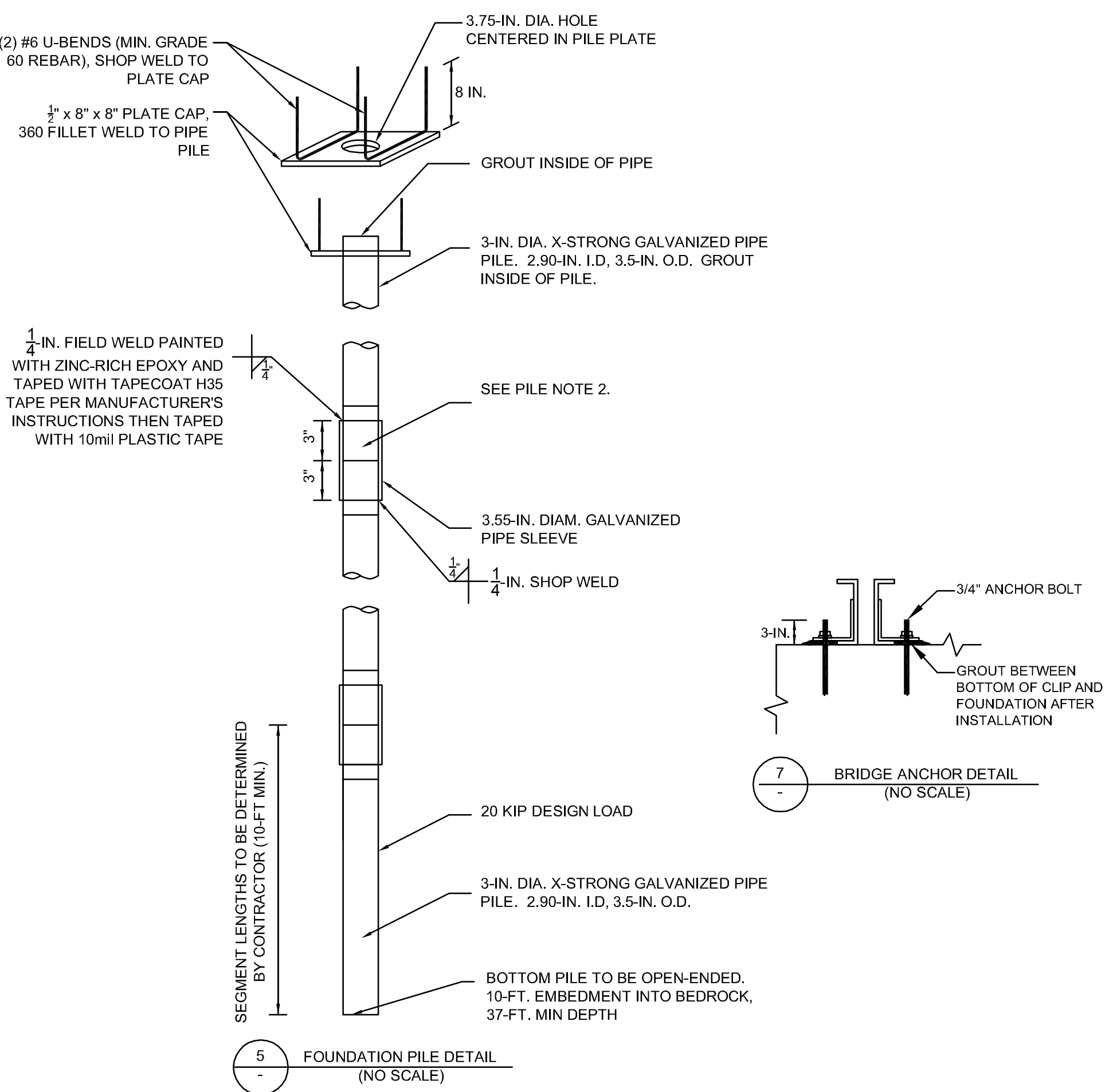


- GENERAL NOTES:**
- The Contractor shall notify the Engineer, Miller Pacific Engineering Group (MPEG), 504 Redwood Boulevard, Suite 220; 415/382-3444, a minimum of 48 hours prior to commencing any aspect of the work.
  - The Contractor shall contact USA (Underground Service Alert) at least 48 hours in advance of work 800/227-2600.
  - The Contractor shall possess a Class "A" License.
  - Technical Specification 3315 Cast-in-Place Reinforced Concrete are part of the plans.
  - The Contractor shall restore access routes to their original conditions. Damage caused to visible or known improvements, such as structures or pavements shall be repaired by the Contractor at no cost to the owners.
  - All excess excavated debris and material shall be hauled from the site legally disposed of by the Contractor.
  - All materials and workmanship shall be in accordance with the latest edition of the State of California, Department of Transportation (Caltrans) Standard Plans and Specifications.
  - Improvement layouts may need to be modified in the field per the direction of the Engineer.
  - See Section 3315 for concrete and steel requirements.

- PIPE PILE NOTES:**
- Piles shall be 3.5 inch O.D. and 2.9 inch I.D. 36 ksi steel pipe piles conforming to ASTM A501.
  - All materials for pipe piles, including pipe, couplers, and caps shall be hot-dip galvanized. Repair welds and any removal of galvanization with paint-on zinc rich epoxy.
  - All pipe piles shall be driven to the minimum depths specified on the plans and driven at a rate to provide at least 20 kips of vertical capacity.
  - The pile Subcontractor shall supply shop drawings describing the details of the pile system and installation criteria for review by the Engineer. The Subcontractor shall not order or fabricate any material until the shop drawings are reviewed and accepted.



NOTE: BRIDGE AND ADJOINING STRUCTURAL MEMBERS NOT SHOWN, SEE DETAIL 7, THIS SHEET



Date	Issues And Revisions	No.
01/15/10	60% DRAFT CONSTRUCTION SET	

PROJECT #18054  
DRAWN BY: DFS  
CHECKED BY: SAS  
ORIGINAL DRAWING SIZE: 24 X 36

SCALE: AS INDICATED

**STRUCTURAL**  
**DETAILS**

Sheet